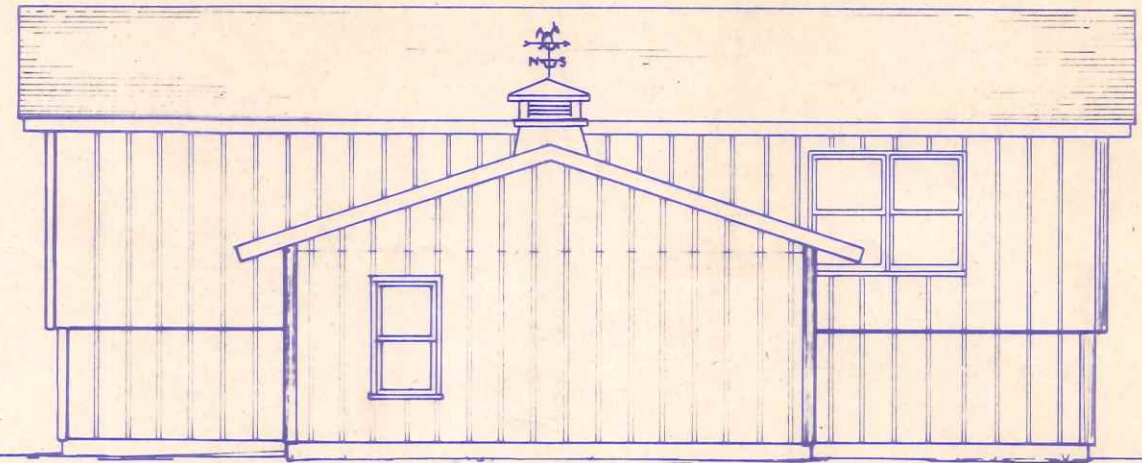
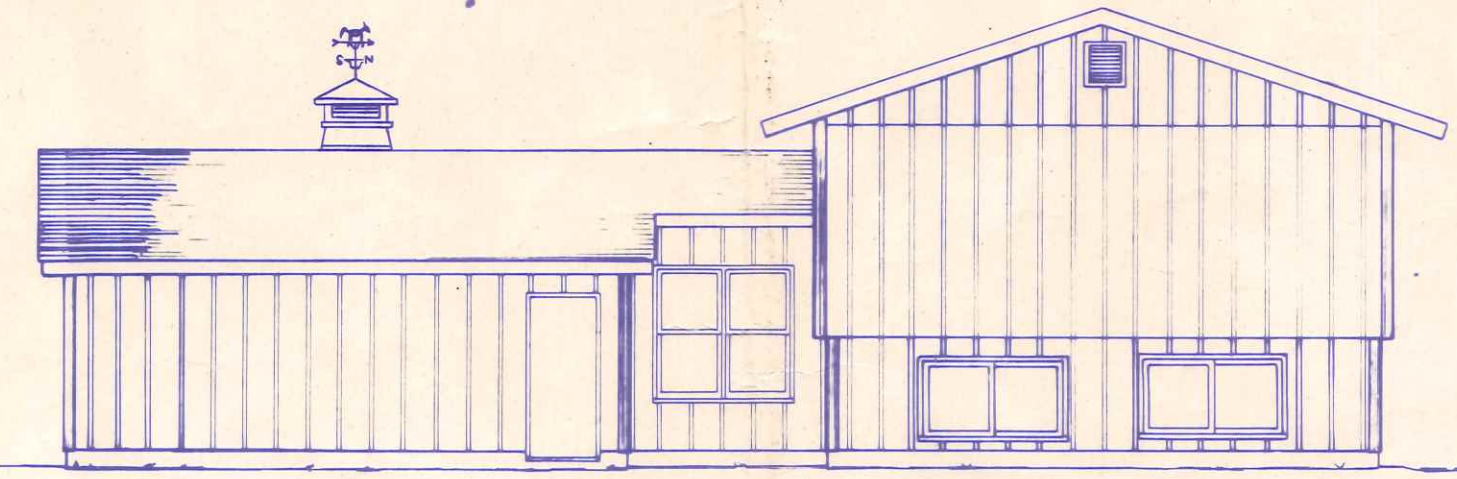


LEFT ELEVATION
SCALE: 1/8" = 1'-0"

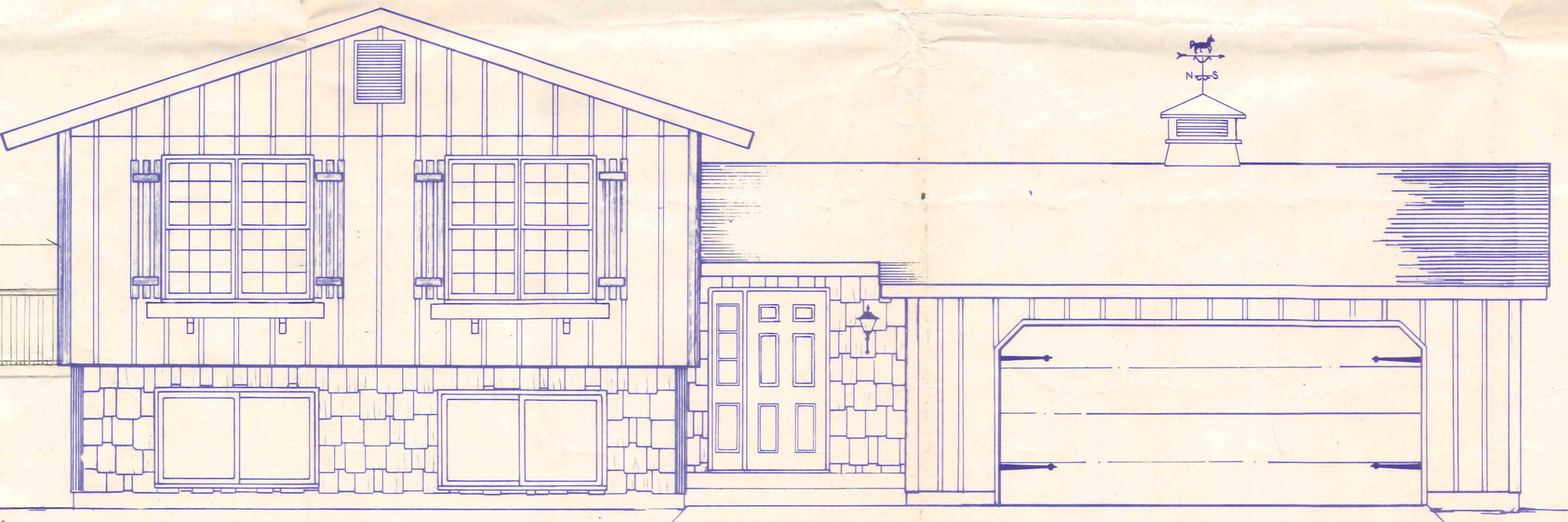


RIGHT ELEVATION
SCALE: 1/8" = 1'-0"



REAR ELEVATION
SCALE: 1/8" = 1'-0"

*Approved
RJK
8/12/80*



FRONT ELEVATION
SCALE: 1/4" = 1'-0"

- GENERAL NOTES**
- "BY OTHERS": Items referenced with the note "BY OTHERS" are not provided by Wausau Homes, Inc. unless specified as included or furnished on the contract. It shall be the responsibility of the Builder/Dealer to make the necessary arrangements with the homebuyer in providing the material and labor in order to complete the home in the manner acceptable with the governing code.
 - All exterior decking & steps By Others.
 - Brick or Stone Veneer as shown are By Others. Standard finish is rough sawn plywood w/battens or reverse board and batten.

A	B	D	F
53	9	D23	

1447 Taylor

S.O. # 39766

WAUSAU HOMES INC.
PLANTS IN
Wausau, Wis. — Ottumwa, Iowa

REVISIONS	
DATE	INIT
9-27-78	JS

ELEVATIONS	
SAVANNAH 5390	
DRAWING NO.	
DRAWN BY JS	SCALE
DATE 9/22/78	CHECKED BY <i>[Signature]</i>
SHEET NO. A-1	